

1013
1013F

Aficio® 1013 / 1013F

Small Workgroup Digital Imaging Systems



RICOH®

Digital Technology

Aficio 1013F

If your document management requirements are a bit more demanding, you'll appreciate the Aficio 1013F with its standard Super G3 fax capability and Automatic Document Feeder. You can also add optional printing for a complete multifunctional solution.

Aficio 1013

If you're looking for an economical solution for day-to-day document management tasks, the Aficio 1013 is the system for you. You can even add optional printing, which makes it ideal for environments where office space is limited.



Aficio® 1013 / 1013F

Feature	Aficio 1013	Aficio 1013F
Copy/Print Speed	13	13
Standard Paper Capacity	350 Sheets	350 Sheets
Maximum Paper Capacity	850 Sheets	850 Sheets
Network or Parallel Printing	Optional	Optional
Automatic Document Feeding	Optional	Standard
Faxing	Not Available	Standard



Aficio® 1013 / 1013F

**Easy-to-Use, Expandable, Affordable.
Desktop Designed for Your Small Workgroup.**

Providing the productivity and versatility of larger and much costlier digital imaging systems, the RICOH® Aficio® 1013 and Aficio 1013F are intelligent choices for any small business. Both the Aficio 1013 and Aficio 1013F have standard digital copying capabilities. The Aficio 1013 can easily be upgraded to a printer only. If your solution requires faxing, choose the Aficio 1013F since it comes standard with faxing capabilities and an automatic document feeder. Plus, you can easily add optional printing and/or network printing to either of these systems for an affordable multifunction solution. Everything about the Aficio 1013/1013F, from their convenient desktop and environmentally friendly design to network connectivity, combine to meet the unique needs of the small workgroup.

Desktop Convenience

With the Aficio 1013/1013F, everything you need to manage your documents fits comfortably on your desktop. A sophisticated design eliminates the need for an unwieldy external exit tray—delivering documents to an easily accessible internal tray. Plus, front loading paper trays ensure quick and easy paper replenishment.



Easy-to-Use from Start to Finish

An excellent combination of digital capabilities and simple operation ensures that every aspect of the document management process is effortless.

Input Capabilities

- **Scan Once, Print Many** – Simply scan your documents once and the Aficio 1013/1013F automatically produces the requested number of copies from memory. This allows you to take your originals and go back to work.
- **Automatic Document Feeding** – Further increase productivity and eliminate the need to manually feed Letter or Legal size originals with the 30 Sheet Automatic Document Feeder. (Standard on the Aficio 1013F; optional on the Aficio 1013.)
- **Easy-to-Navigate Control Panel** – Everyone's an expert operator thanks to the Aficio 1013/1013F's intuitive Control Panel. Logically ordered by function, you'll find it easy to select the desired Aficio 1013/1013F's features with ease.

Aficio 1013F control panel with printer option shown below.



Output Capabilities

- **Outstanding Image Quality** – Crisp **600 dpi laser resolution** in all modes and **256 levels of grayscale** ensures that output always meets your expectations. Plus, a variety of original modes make it easy to produce a variety of documents including general correspondence, spreadsheets and business graphics.
- **Large Paper Supply** – Breeze through any job without stopping to replenish or switch paper thanks to the Aficio 1013/1013F's **standard 350 sheet paper supply**, which includes a 100 sheet Bypass Tray. Simply add the optional 500 sheet paper bank for a **maximum 850 sheet paper capacity**.
- **Combine Originals** – It's more efficient to store originals that you must keep, but seldom refer to, when you have the Aficio 1013/1013F place two images on a single page.



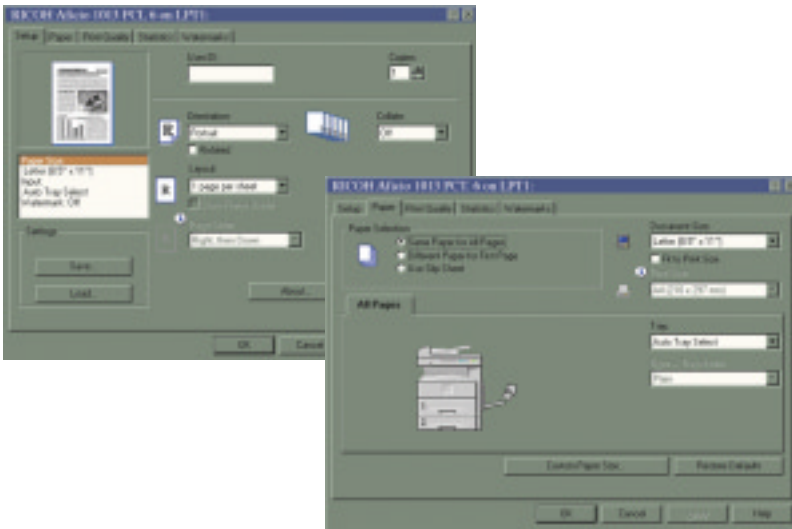
Printer Expandability

Productive printer expandability allows you to get more work out of your Aficio 1013/1013F and your network.

Network Printing

Add the optional Print Controller and Ethernet 10/100BaseT Interface and efficiently output electronic files.

- **Standard PCL 5e/6** – Ensure compatibility with today's most prevalent business and graphics applications.
- **Legal Size Printing** – Increase versatility with the Aficio 1013/1013F's ability to print on oversize paper.
- **Auto-Run Installation** – Just pop in the CD, click "install" and your print drivers and network management utility automatically load onto your computer.
- **SmartNetMonitor** – Allows users and administrators to monitor and manage the optional print capability of the Aficio 1013/1013F.



Standard Faxing Capability *(Aficio 1013F only)*

If your documents must go to distant locations, the Aficio 1013F (with standard fax capability) is the fastest way to get them there.



- **Super G3 33.6 Kbps ITU V.34 Fax Modem** – Send documents in as little as 3 seconds per page and you'll like the way your phone bills instantly drop.

- **Dual Access** – Increase overall fax productivity by scanning and storing an outgoing transmission into memory while receiving an incoming fax or transmitting another fax from memory.
- **Advanced Capabilities** – Enjoy high-volume fax performance thanks to capabilities such as Batch Transmission, Battery Backup and Serial Broadcasting.



Affordable In Every Way

When it's all said and done, the Ricoh Aficio 1013/1013F excel in saving you money.

- **Standard faxing** (Aficio 1013F) and **optional printing** (Aficio 1013/1013F) eliminates the need to purchase, and maintain, separate systems.
- A **dual component consumable design**, which includes a separate toner and photoconductor, reduces cost-per-page, simplifies routine maintenance and ensures consistent costs whether you're producing copies, prints or faxes.

Be on Good Terms with the Environment



Ricoh has a long commitment to implementing sound environmental design concepts. The Aficio 1013/1013F incorporate capabilities that create a healthier and safe environment.

- **Toner Recycling** – Maximizes toner yield, minimizes waste and lowers overall toner consumption.
- **Energy Saver Mode** – Significantly reduces power consumption while the Aficio 1013/1013F are in sleep mode.

**The Ricoh Aficio 1013/1013F...
Dependable Digital Systems
Built for Business**

RICOH®

Aficio® 1013/1013F *Integrated Digital Imaging Systems*

Engine Specifications

Imaging Process:	Dry Process, (dual component)
Reading Element:	Solid State Scanner
Configuration:	Desktop (Cabinet Optional)
Resolution:	600 x 600 dpi
Grayscale:	256 Gradation Levels
Document Feeding:	30 Sheet Automatic Document Feeder (Aficio 1013F standard)
Paper Supply:	250 Sheet Tray
Bypass:	100 Sheets
Paper Weight:	16 – 24 lb. Bond (Paper Trays) 14 – 42 lb. Bond (Bypass)
Output Tray Capacity:	250 Sheets
Power Source:	120V/60Hz/15A
Dimensions (WxDxH):	18.43" x 17.72" x 14.61" (Aficio 1013) 18.43" x 17.72" x 18.35" (Aficio 1013F)
Weight:	44 lbs. (Aficio 1013) 48 lbs. (Aficio 1013F)

Copier Specifications

Warm Up Time:	20 Seconds
First Copy Speed:	8.0 Seconds
Multi-Copy Speed:	13 copies/minute Letter
Quantity Indicator:	1 – 99
Original Type:	Sheet
Original Size:	Up to 8½" x 11" Up to 8½" x 14" with ADF 5½" x 8½" to 8½" x 14"
Copy Size:	5½" x 8½" to 8½" x 14"
Reproduction Ratios:	65%, 78%, 93%, 129%, 155%
Zoom:	50% – 200% in 1% increments
Memory Capacity:	8 MB Standard, 32 MB Optional

Copier Features

Auto Image Density
Auto Start
Combine Originals
Electronic Sorting w/opt. Memory
Energy Saver Mode
Photo Mode

Printer Specifications (Aficio 1013/1013F)

Print Speed:	13 PPM
Interface:	Standard: IEEE 1284 Optional: Ethernet 10/100BaseT
Network Protocol:	TCP/IP, IPX/SPX, AppleTalk (Autoswitching)
CPU Speed:	75 MHz
RAM Memory Capacity:	Standard: 16 MB SDRAM Optional: Up to 80MB SDRAM

PDL:	Standard: PCL 5e/6 Optional: PostScript 2 (emulation)
Print Drivers:	PCL 5e for Windows 95/98/ME (Millennium Edition), NT 4.0, 2000 PCL 6 for Windows 95/98/ME (Millennium Edition), NT 4.0, 2000 PS2 for Windows 95/98/ME (Millennium Edition), NT 4.0, 2000 Macintosh 8.x/9.x
Resolution:	PCL5e/6: 600 dpi PS2: 300/600 dpi

Printer Features

Auto Tray Select
Auto Tray Switching
Paper Size Setting
SmartNetMonitor
Transmit Once, RIP Once
Tray Locking
Watermarks
Options:
Printer Controller Type 1013
Network Interface Board Type 1018
PostScript 2 Kit Type 1018
32/64 MB Memory

Facsimile Specifications (Aficio 1013F only)

Circuit:	PSTN, PBX
Compatibility:	ITU-T G3
Resolution:	200 x 100/200/400 dpi
Compression:	MH, MR, MMR
Scanning Speed:	2.4 seconds per page

Modem Speed	33.6 Kbps
Transmission Speed	G3: 3.0 seconds*,**
Data Compression:	MH, MR, MMR
Page Memory:	5 MB

Fax Features

Batch Transmission
Battery Backup
Dual Access
Error Correction Mode
Send Later
Serial Broadcasting
Substitute Reception
Super Smoothing
Options:
Fax Option Type 1013
Handset Type 1018

* Based on ITU-T Test Chart #1 in standard mode.

** Approximately 3 seconds per page at 33.6 Kbps is dependent on optional line quality. Customer performance may vary by location.

Accessories

DF74 Automatic Document Feeder (Aficio 1013 only)

Original Size:	5½" x 8½" to 8½" x 14"
Original Weight:	14 to 28 lb. Bond
Original Capacity:	30 Sheets
Dimensions (WxDxH):	4.3" x 14.2" x 3.74"
Weight:	4.41 lbs.

PS480 Paper Bank ▼

Paper Capacity:	500 Sheets x 1 Tray
Paper Size:	8½" x 11" to 8½" x 14"
Paper Weight:	16 to 24 lb. Bond
Dimensions (WxDxH):	10.9" x 16.3" x 5.5"
Weight:	13.22 lbs.

▼ cabinet available

Note: Aficio 1013 comes standard with a platen cover. ADF is optional. Aficio 1013F comes standard with fax and ADF. All systems shown with optional accessories.

Ricoh Consumables. For maximum performance and yield, we recommend using genuine Ricoh parts and supplies.

Specifications and external appearance are subject to change without notice.

♻️ Printed in the U.S.A. on recycled paper because Ricoh cares.

RICOH is a registered trademark of Ricoh Company, Ltd.

All other trademarks are the property of their respective owners. © Ricoh Corporation



OFFICIAL COPIER AND FAX
OF THE PGA OF AMERICA



EPA 1998/1999 Imaging Partner of the Year, EPA 1997 Copier Partner of the Year, EPA 1996 Overall Office Equipment Partner of the Year, EPA 2000 Excellence in Consumer Education: Labeling partner of the Year and Office Equipment Partner of the Year. Ricoh Corporation has determined that this product meets the Energy Star® guidelines for energy efficiency.

RICOH®

Image Communication

Ricoh Corporation, Five Dedrick Place, West Caldwell, NJ 07006
Phone: (973) 882-2000 www.ricoh-usa.com